

# Report on sGGG Temperature Control Performance.

Raffaello Pegna

January 11, 2012.

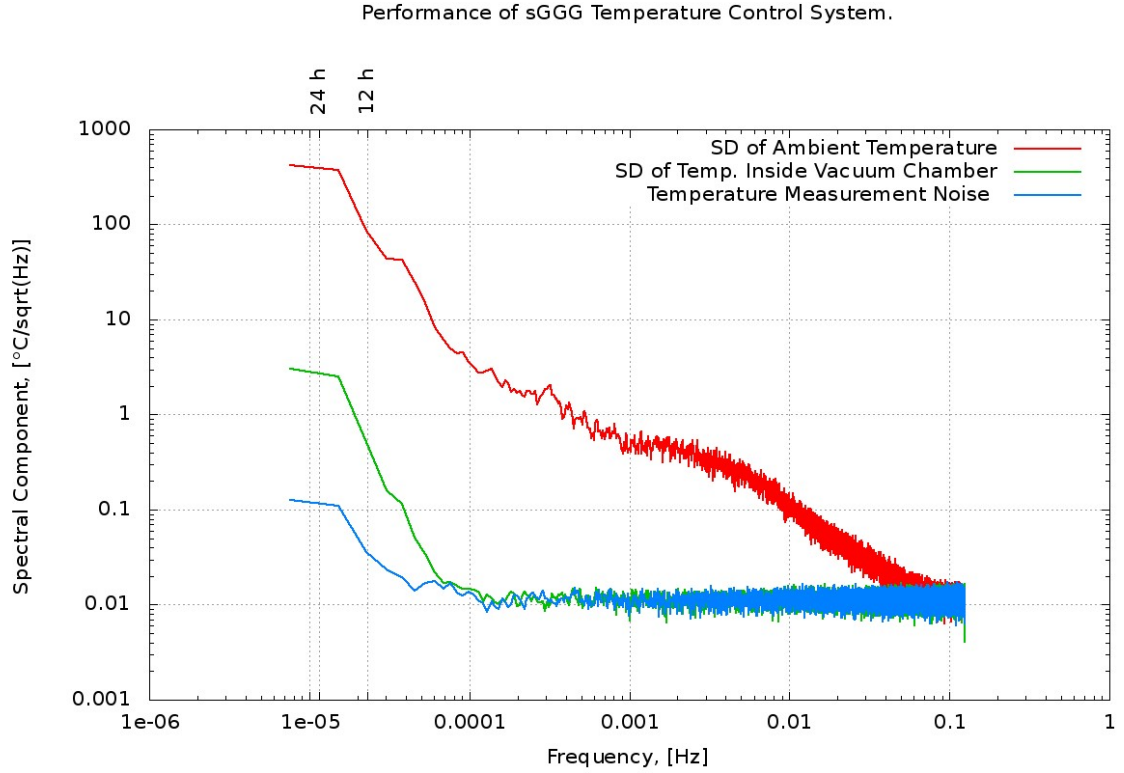


Figure 1: Performance of sGGG Temperature Control System. Ambient temperature variations (in red) are attenuated inside the vacuum chamber (in green) by about two order of magnitude, limited only by the temperature readout noise starting from frequencies higher than  $10^{-4}$  Hz.

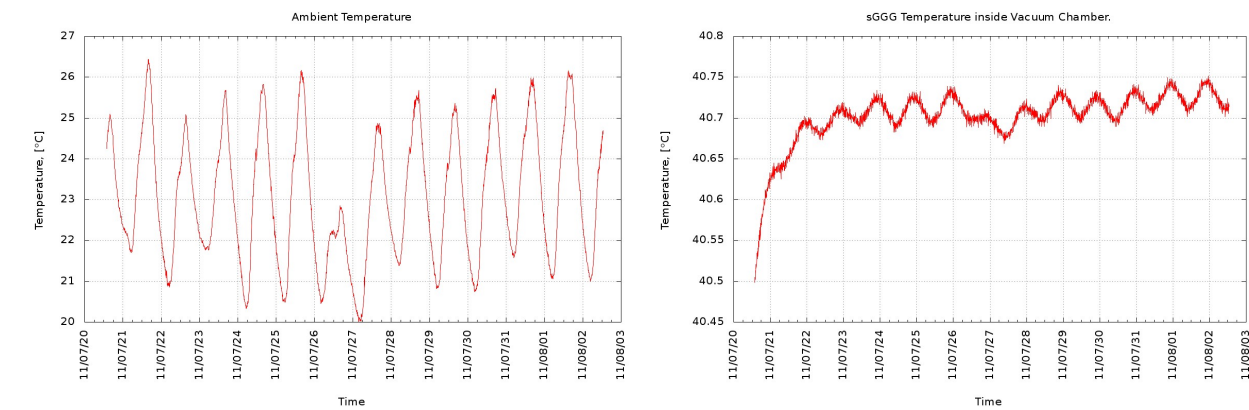


Figure 2: Left plot: Timeseries of the ambient temperature outside the GGG vacuum chamber, representing the input disturbance to the Temperature Control System. Right plot: Timeseries of the temperature inside the GGG vacuum chamber, showing an attenuation by a factor 200 with respect to the ambient temperature variations.